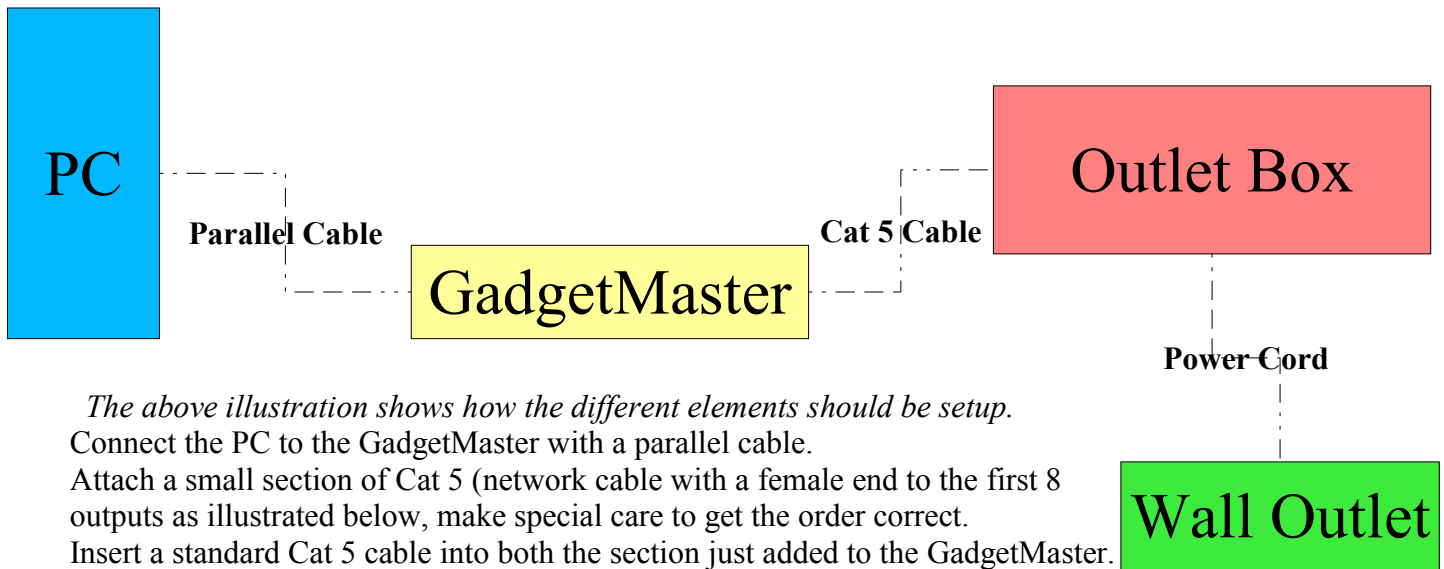


# GadgetLights User Manual

Version 1.0

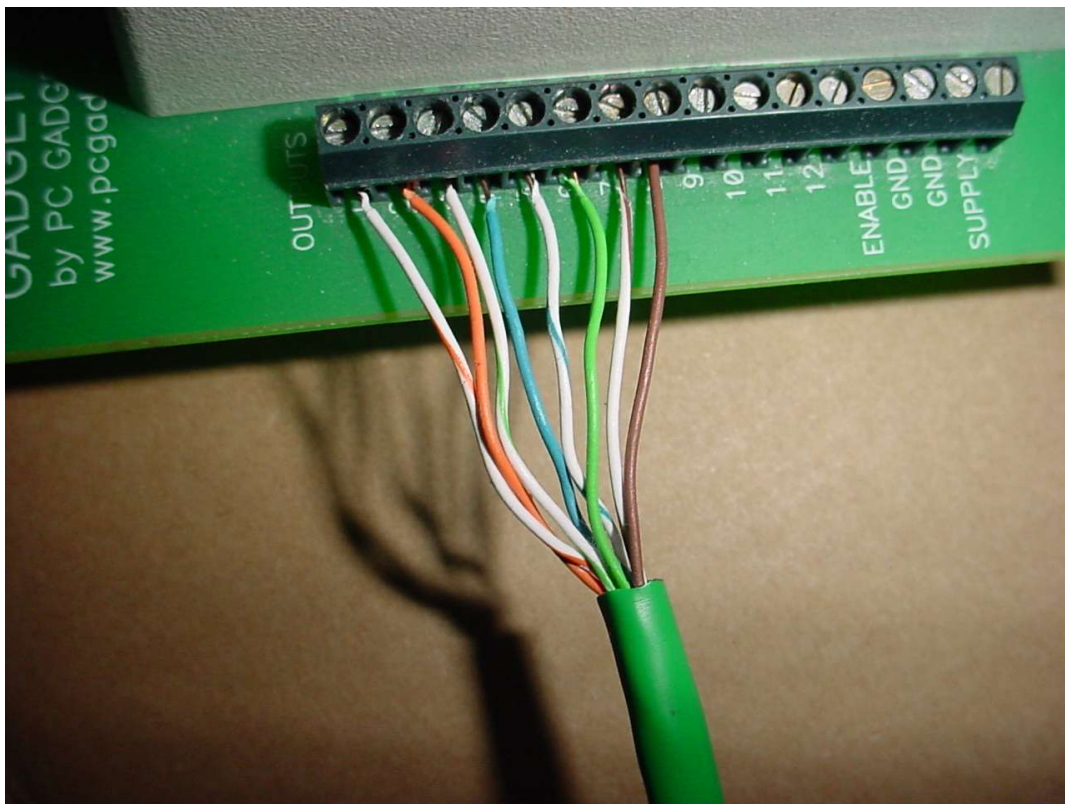
Setting Up the Outlet Box.....	1
Running GadgetLights.....	2
Message Numbers.....	2

# Setting up the Outlet Box



*The above illustration shows how the different elements should be setup.*

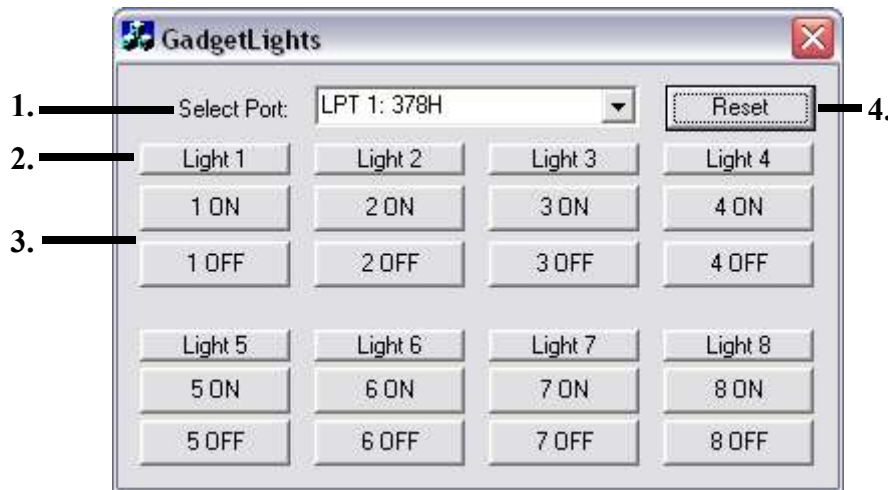
1. Connect the PC to the GadgetMaster with a parallel cable.
2. Attach a small section of Cat 5 (network cable with a female end to the first 8 outputs as illustrated below, make special care to get the order correct.
3. Insert a standard Cat 5 cable into both the section just added to the GadgetMaster.
4. Connect the other end of the Cat 5 cable to the Outlet Box.
5. Finally plug the Outlet Box into a standard wall outlet.
6. The Outlet box should be ready to use.



# Running GadgetLights

Before running GadgetLights you must install the NTPort libraries.

1. Select which parallel port the GadgetMaster is plugged into
2. Indicates if the light is currently on. It is pressed if the light is on.
3. Press these buttons to turn the corresponding lights on or off.
4. Turns off all the lights.



## Message Numbers

1001 – Turn 1 On	1101 – Turn 1 Off
1002 – Turn 2 On	1102 – Turn 2 Off
1003 – Turn 3 On	1103 – Turn 3 Off
1004 – Turn 4 On	1104 – Turn 4 Off
1005 – Turn 5 On	1105 – Turn 5 Off
1006 – Turn 6 On	1106 – Turn 6 Off
1007 – Turn 7 On	1107 – Turn 7 Off
1008 – Turn 8 On	1108 – Turn 8 Off
1009 – Reset	