

SoundSync User Manual

Version 0.85

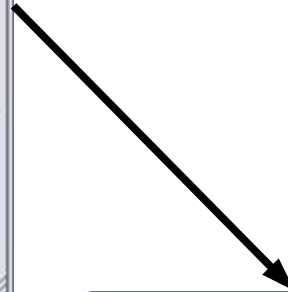
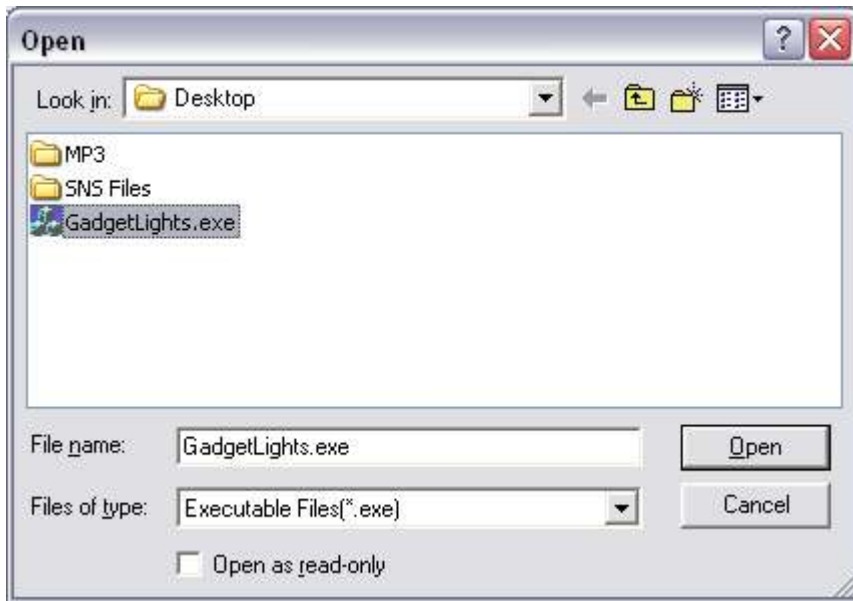
Parts of the Window.....	1
Creating a new Process.....	2
Editing a Process.....	2
Creating a new Command.....	3
Editing a Command.....	3
Adding a Trigger.....	3
Modifying the Triggers.....	3

Parts of the Window



1. Create a new file
2. Open an existing file
3. Save the file
4. Change the audio track
5. Moves cursor to the last position seeked to
6. Begins playback
7. Pause the playback
8. Position of cursor
9. Start/Restart all processes
10. Setup a new process
11. Setup a new command for the selected process
12. Zoom In
13. Zoom Out
14. Reset Zoom Amount
15. Available Processes
16. Commands for the parent process
17. Triggers for all commands and processes
18. Cursor
19. Audio Track
20. Seek Area, click to seek to that position

Creating a new process



1. Click the Add Process button
2. Select the .exe file for the desired process and click Open
3. Enter the desired name for it, click OK
4. The new process should now appear in the tree of the left

Editing a processes

(All processes have an absolute path, you may need to edit processes in files created on other computers)



1. Select the process desired process from the tree
2. Right click on the process
3. If you want to change the .exe file click browse and select the new file.
4. If you want to change the name, just change the text
5. Click OK or Cancel to close the window

Creating a new command



1. Select the process you want to add a command to from the tree.
2. Click the Add Command button.
3. Enter the desired name for the command.
4. Enter the Windows message number for the command.
(This can be found using software such as Spy++ or Winspector Spy)
5. Click OK or Cancel to close the window.

Editing a command



1. Select the command you want to edit from the tree.
2. Right click on the command.
3. Update the name and message number.
4. Click OK or Cancel to close the window.

Adding a Trigger

1. Select the command you want to add a trigger for from the tree.
2. Click and drag it from the tree into the main area.
3. Release the trigger at the desired position.

Modifying the Triggers

1. Triggers can be moved by clicking and dragging them around the main area.
2. You can select multiple triggers by holding down either Shift or Ctrl while clicking on triggers.
3. You can drag multiple triggers by continuing to hold down Shift or Ctrl while dragging the mouse.
4. To delete all selected cursors, press delete on the keyboard.