

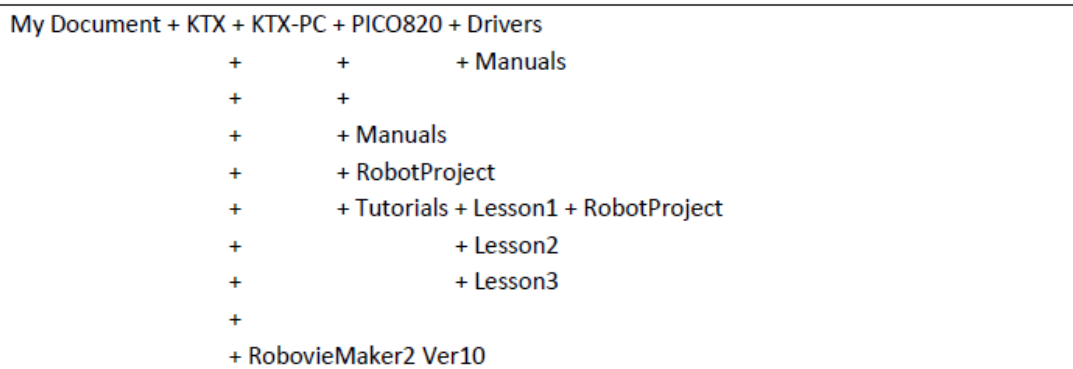
Compare the next page with:

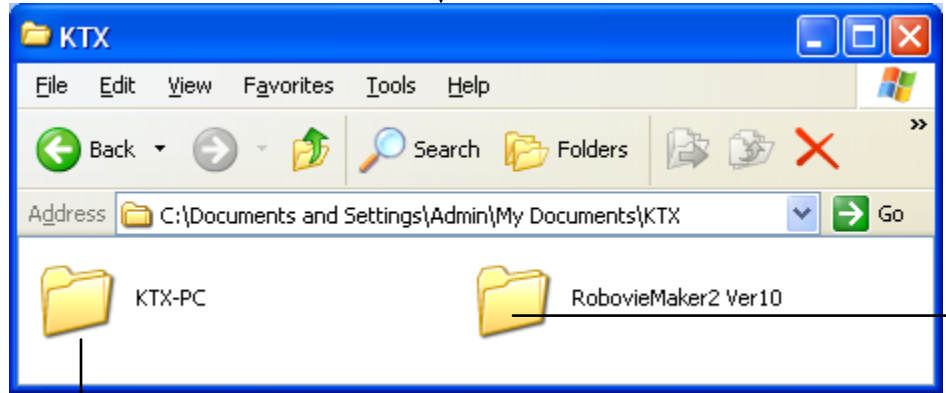
Lesson 1: Make your KTX-PC Walk!

1 Download Robot Project file

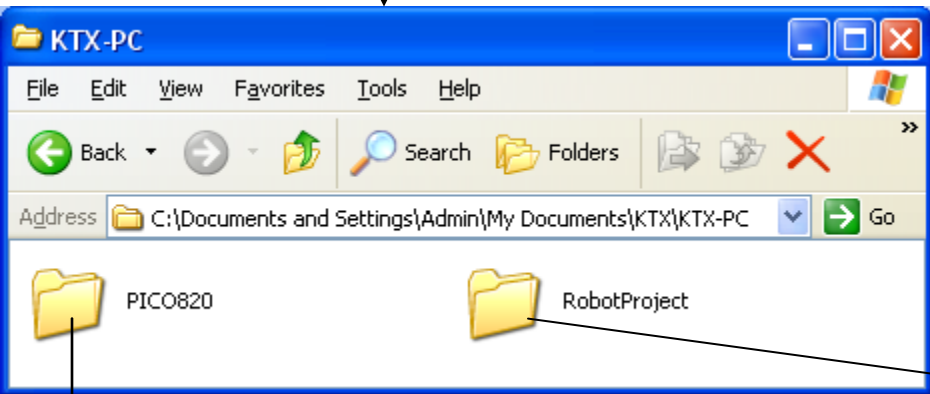
Place the Project file in your workspace directory and unzip the file. Then, copy the unzipped robot project files into your working directory for this lesson.

Following is example of workspace folder structure.

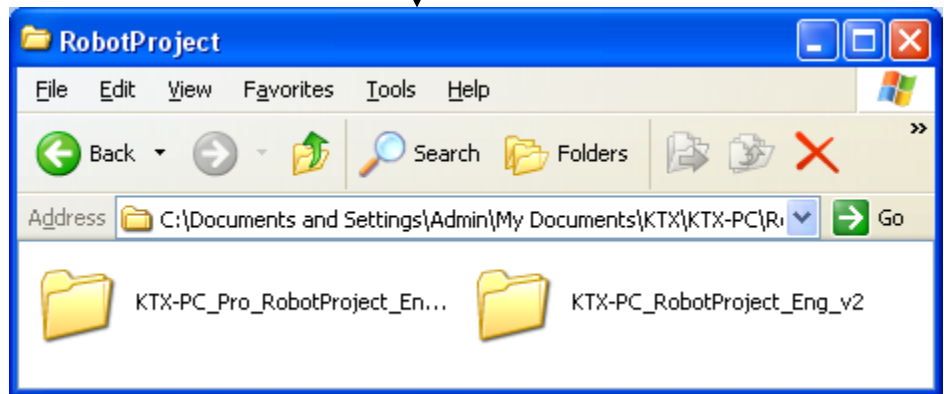
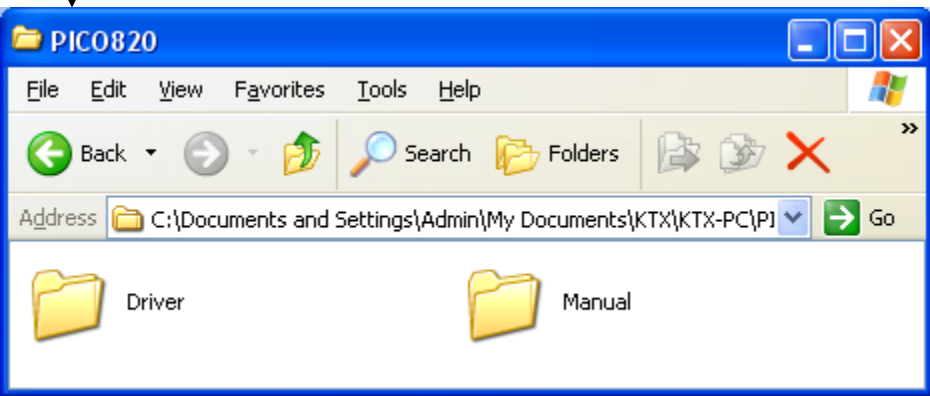




This is the installation folder for robovie



There can be other folders in here for the manuals not related to PICO820 and if you want to separate the tutorials from other robot projects



For KTX-PC Pro

For non-pro KTX