

Choreographing Events User Guide

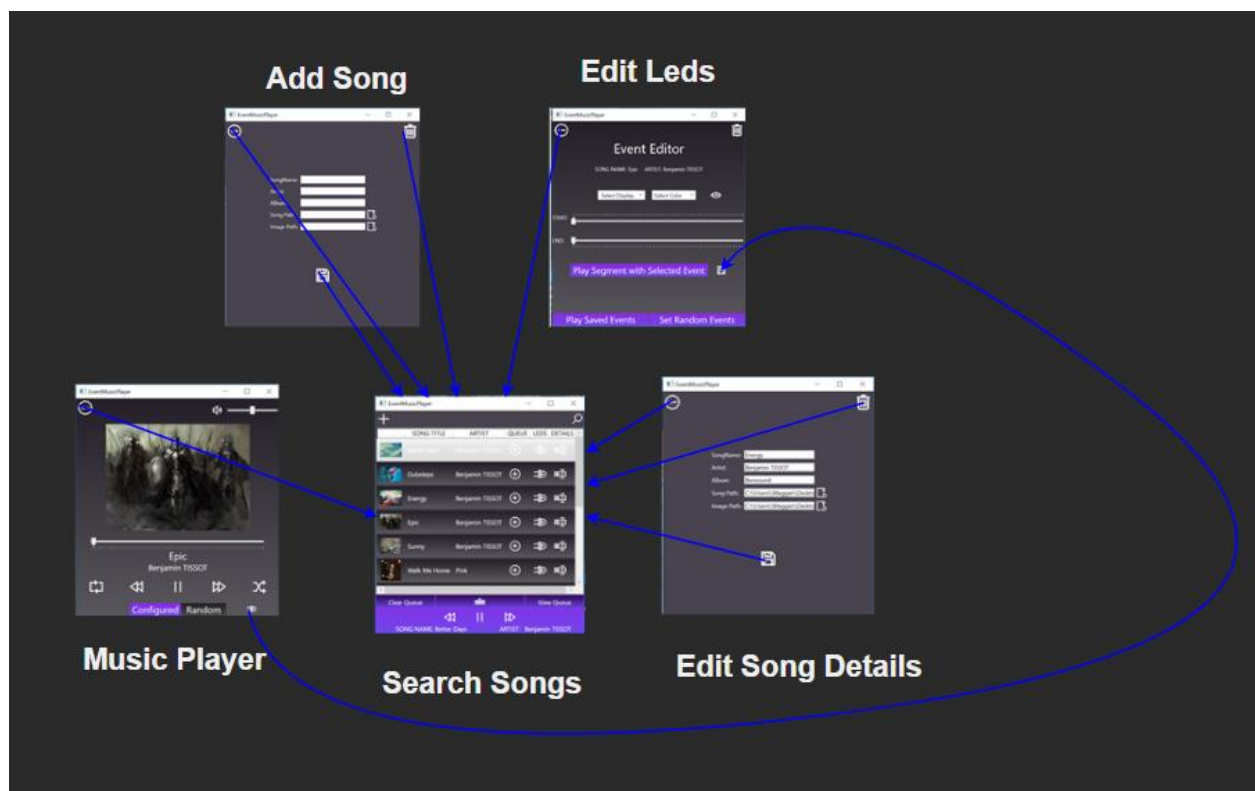
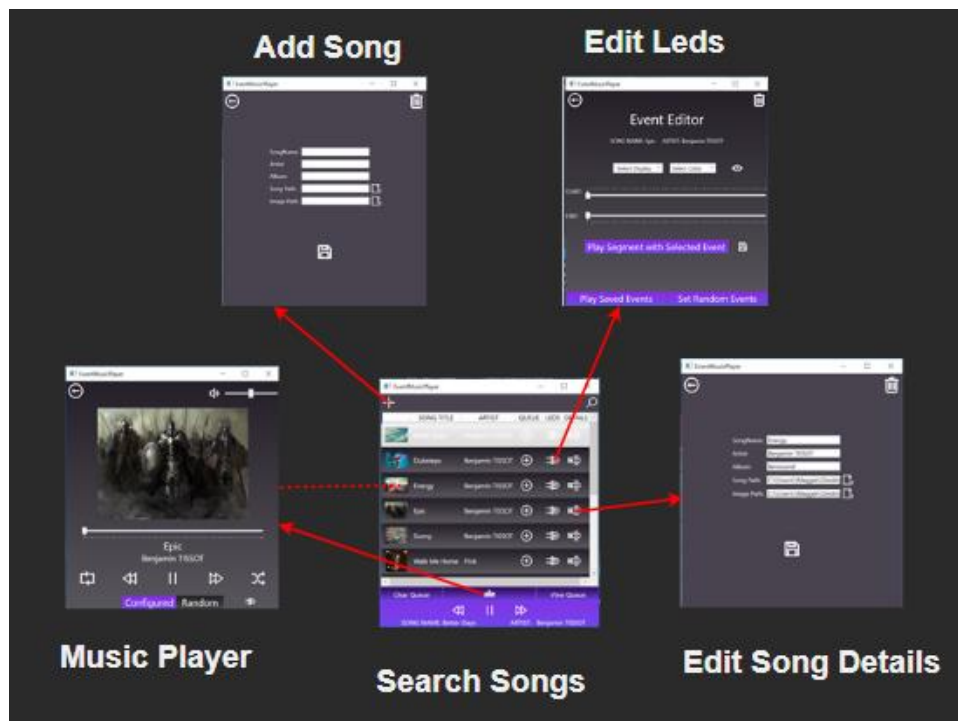
Maggie Krummel

05/07/2019

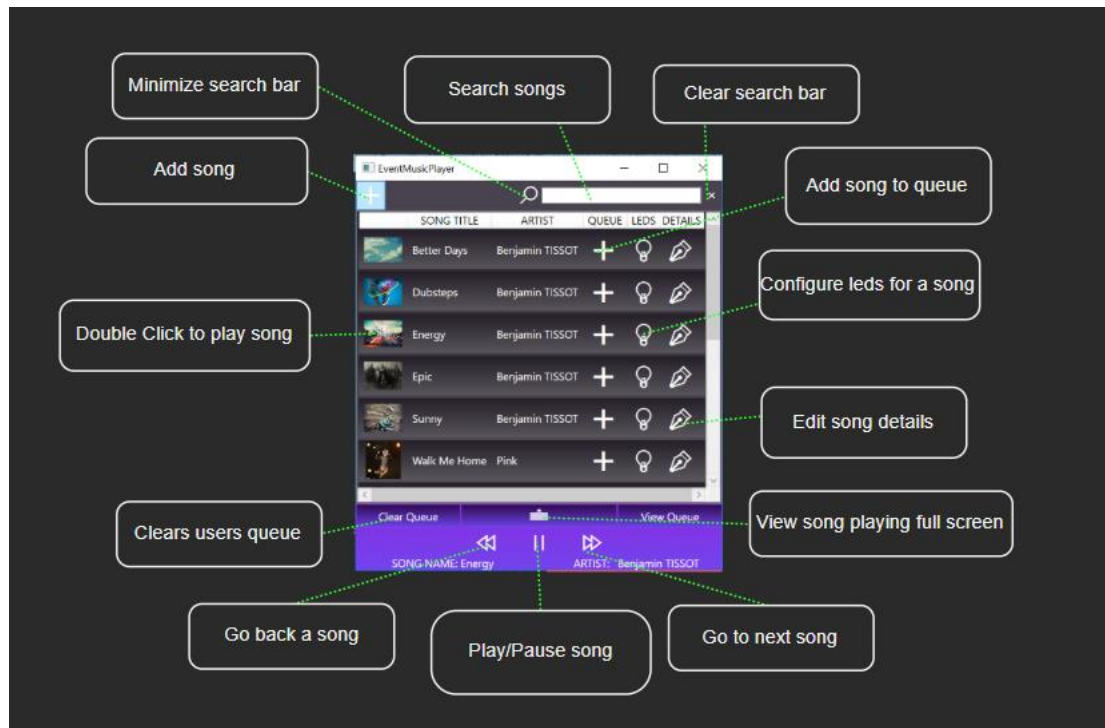
*****Warning strobe lights may be used in this app**

*****Please see setup in Programmers Manual first, you must have a database setup to run this application**

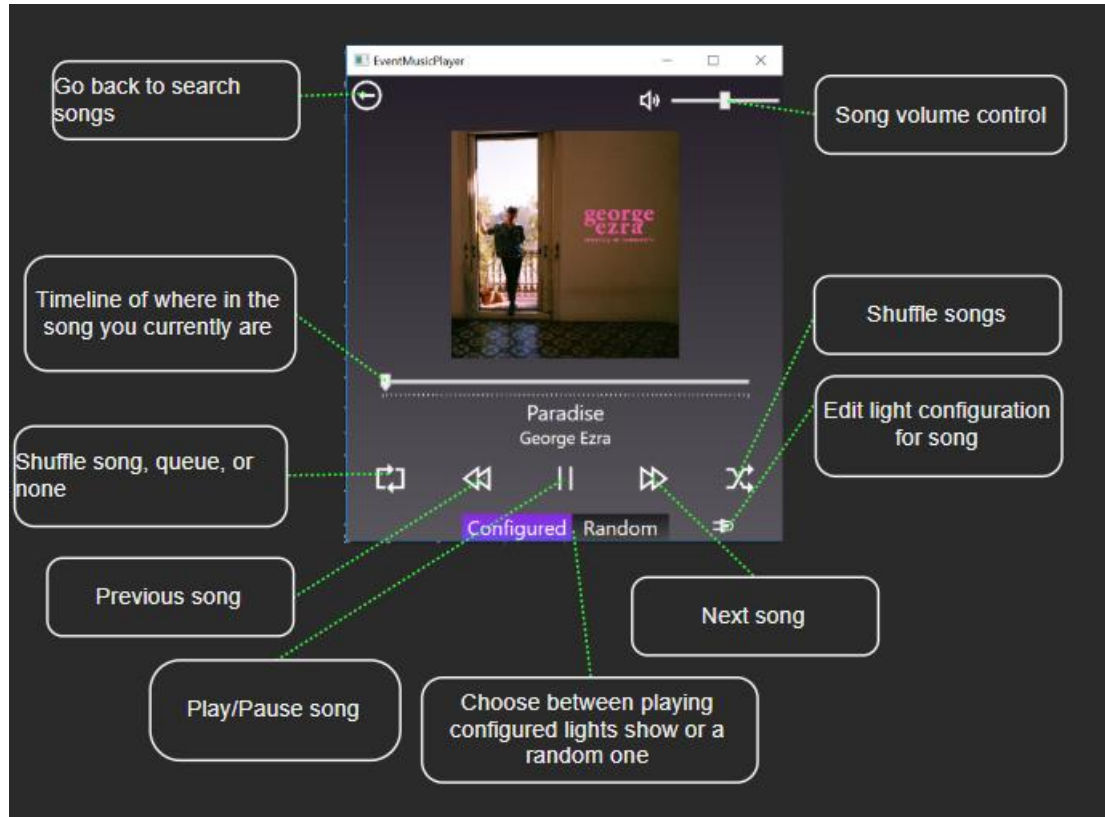
Navigation Between User Interfaces



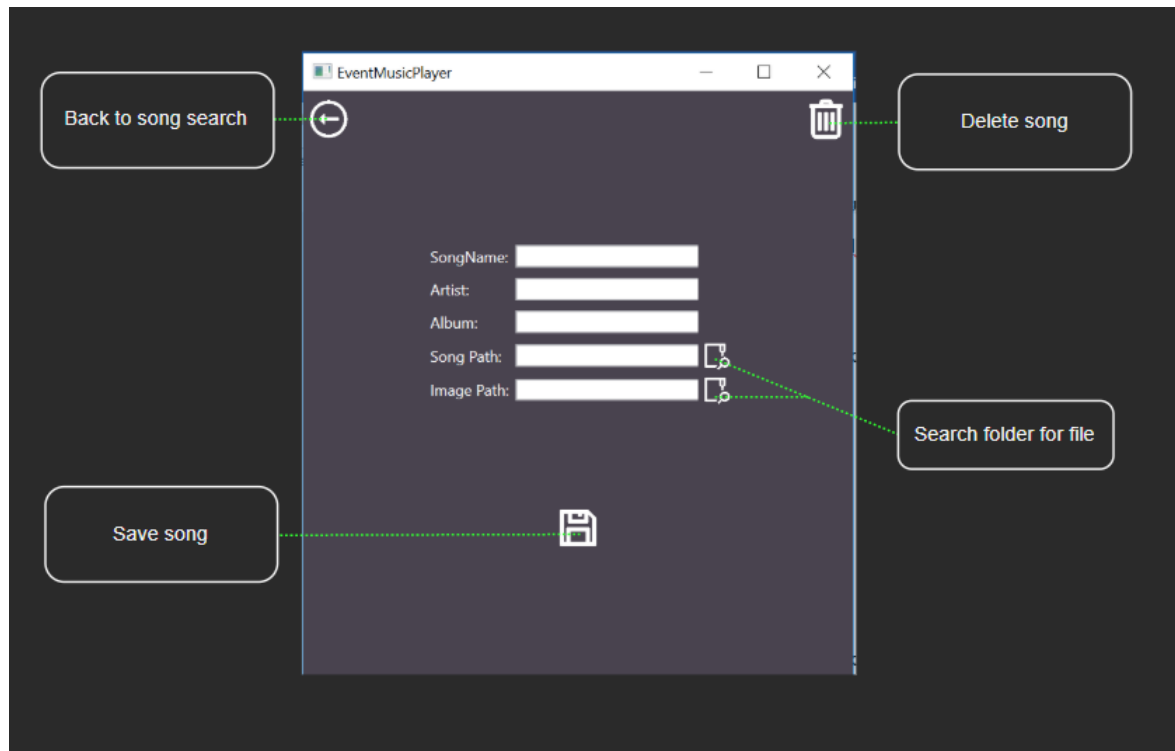
Home Screen



Currently Playing Song View



Add/Edit Song Details



Configure Led Lights to Selected Song

